

Updates on the Westport Landslide Emergency Project

Presentation for:
**Westport Municipal Advisory
Council Meeting**

March 7th, 2024
Westport Community Center
24900 Abalone St
7 p.m.



This Evening's Presenters

Trevor Goff – Project Manager (Emergency Project)

Charlie Narwold – Senior Engineering Geologist

Geoffrey Wright – Area Construction Engineer (Mendocino Coast)

Tim Keefe – Supervising Environmental Scientist/Archaeologist

Lianna Winkler-Prins – Project Manager (longer-term Restoration Project)



Objectives of Tonight's Presentation

1) Provide the community of Westport (and other affected coastal communities) an update on Westport projects.

- **PAST**– Give a brief history of Caltrans' recent maintenance efforts at Westport slide.
- **PRESENT**– Provide an update on the current Emergency Project.
- **FUTURE** – Discuss the scope and timeline of the longer-term Restoration Project.



2) Answer questions from and address concerns of community member.

Recent History of Westport Slide Maintenance ------(2021 to present)-----

- **2021** – Construction of two soldier pile ground anchor (SPGA) walls was completed. Due to highly complex and large-scale nature of the slide, it was known these walls would not stabilize the entire slide, but rather prevent retreat of the slope below the roadway and stabilize the road prism within the wall limits.
- **Winter 2021/2022** – Heavy winter storms led to roadway settlement and cracking. Embankment loss observed beneath the down drain systems. District Director's Order for repairs (01-0M1504).
- **Spring 2023** – Permanent Restoration Project (01-0M290) was programmed. Scope: Slope dewatering system, RSP revetment at toe of slope, two additional SPGA walls
- **August 2023** – Director's Order for repairs (01-0N4404), due to damage from Winter 2022/2023 storms. Scope: Extend existing SPGA wall north, RSP revetment at toe of slope



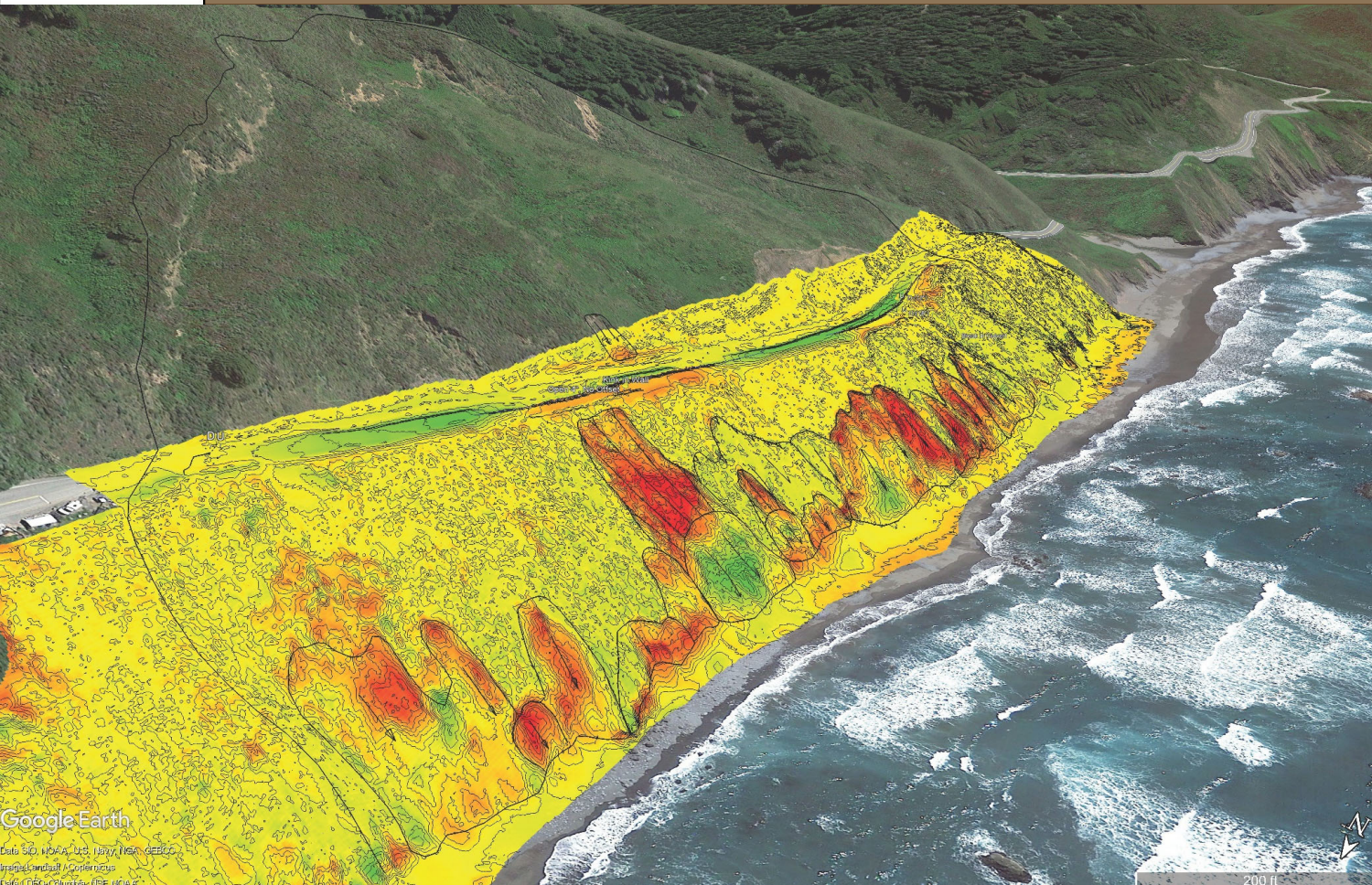


Westport Slide Route 1





2020 to 2022 Photogrammetry Change Detection

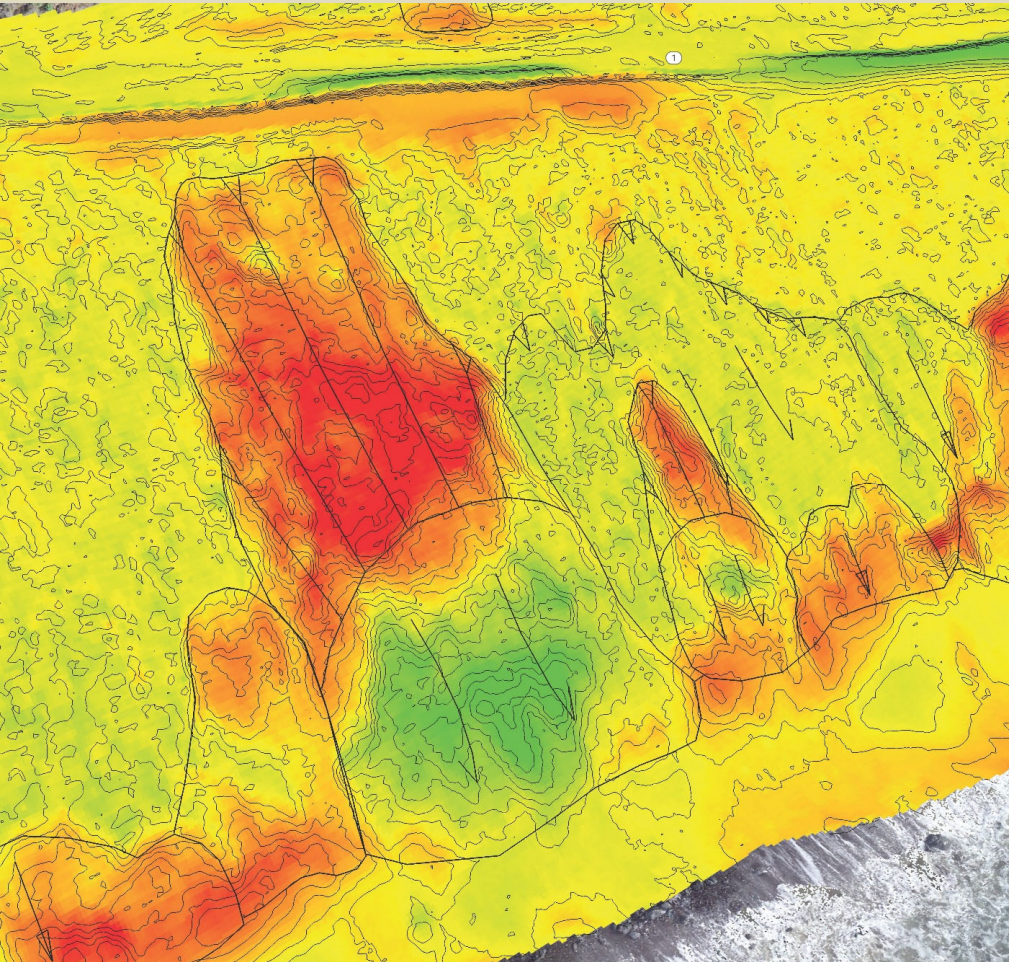


Change Detection Key

- Red = Elevation Loss
- Green = Elevation Gain
- Yellow = Elevation Static
- 2-foot Change Contour Overlay



2020 to 2022 Photogrammetry Change Detection Detail





Example of Coastal Revetment – Juan Creek



Current Emergency Work: Updates from Construction

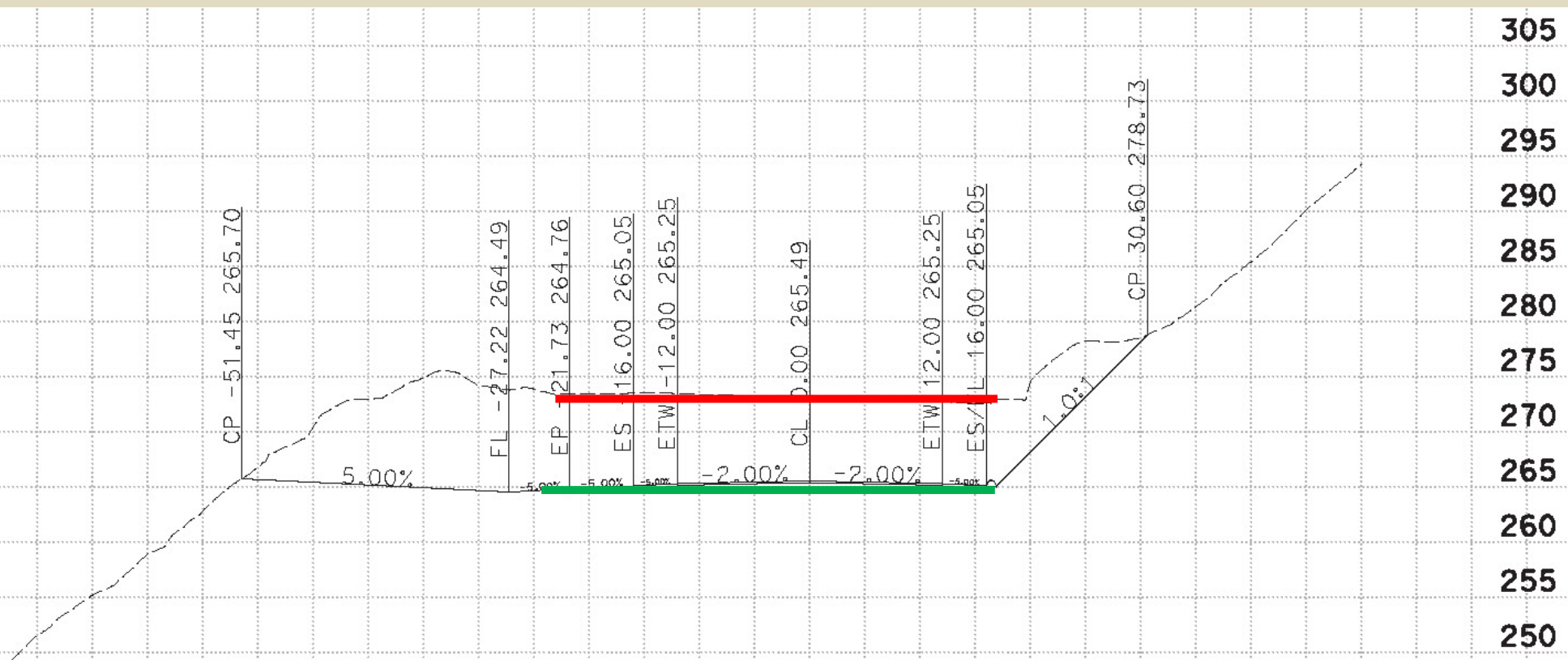
Work Performed:

- Stormwater Management, Traffic Control, Utility relocation
- Lowering of roadway profile (to make a safer vertical curve)
- Began geotechnical investigation (drilling on roadway)





Current Emergency Work: Updates from Construction



Current Emergency Work: Updates from Construction



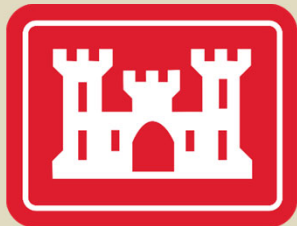
Work Remaining:

- Complete Geotechnical Investigation
- Construct Soldier Pile Ground Anchor (SPGA) wall, which will extend limits of existing northern SPGA wall
- Evaluate feasibility of revetment at toe of landslide to reduce coastal erosion

White line = Limits of Future SPGA Wall



Current Emergency Work: Updates from Environmental



Actions

- Continuous coordination with Design and Construction
- Consulting with concerned Regulatory Agencies such as the CA Coastal Commission, Mendocino County, Water Boards, US Army Corps of Engineers, National Marine Fisheries Service etc
- Consulting with Tribes

Results:

- Protection for sensitive species, water quality, wetland areas & Coastal Resources
- Understanding potential regulatory permitting needs
- Agencies and Tribes understand what is happening and how the work will occur.





Future Restoration Project: Updates from Project Manager

- Longer-term restoration project will pick up where emergency work leaves off.
- Alternatives considered for restoration project:
 - 1) Subsurface drainage system (to slow/stop landslide movement)
 - 2) Tunnel (very costly but still being considered)
 - 3) ~~Inland Bypass~~ (deemed too impactful, expensive, and difficult to construct)
- Tentative Timeline:
 - Now to Spring 2026: Geotechnical investigation and monitoring
 - Spring 2026: Begin Environmental studies
 - January 2028: Circulate Draft Environmental Document to the public & stakeholders
 - January 2030: End PA&ED (Project Approval & Environmental Document) Phase



Questions?

For future questions and/or concerns, please contact the following:

Shorter-Term Emergency Project

Trevor Goff
Project Manager
(707) 496-4532
trevor.goff@dot.ca.gov

General Inquiries

Manny Machado
Public Information Officer
(707) 496-6879
manny.machado@dot.ca.gov

Longer-Term Restoration Project

Lianna Winkler-Prins
Project Manager
(707) 798-7737
lianna.winkler-prins@dot.ca.gov